



46 Riverside Drive

Sprotbrough, Doncaster, DN5 7LE

Asking Price £370,000

Positioned on the edge of the development, with a very pleasant woodland aspect to 2 sides, a comprehensively renovated 3 bedroom detached bungalow, with a high standard of fit / finish throughout. Located in this highly sought after village, with a variety of local amenities, and close to country walks. Excellent motorway and city centre access.

Briefly comprises; reception area, large, well appointed dining kitchen with a host of integrated appliances. Lounge enjoying an aspect across the garden and woodland beyond. Inner hallway accessing 3 bedrooms and luxury appointed bathroom.

Outside; secluded, low maintenance rear garden. Side gardens enjoying a good degree of privacy, bordered with woodland. Garage and further parking.

Viewing very highly recommended.

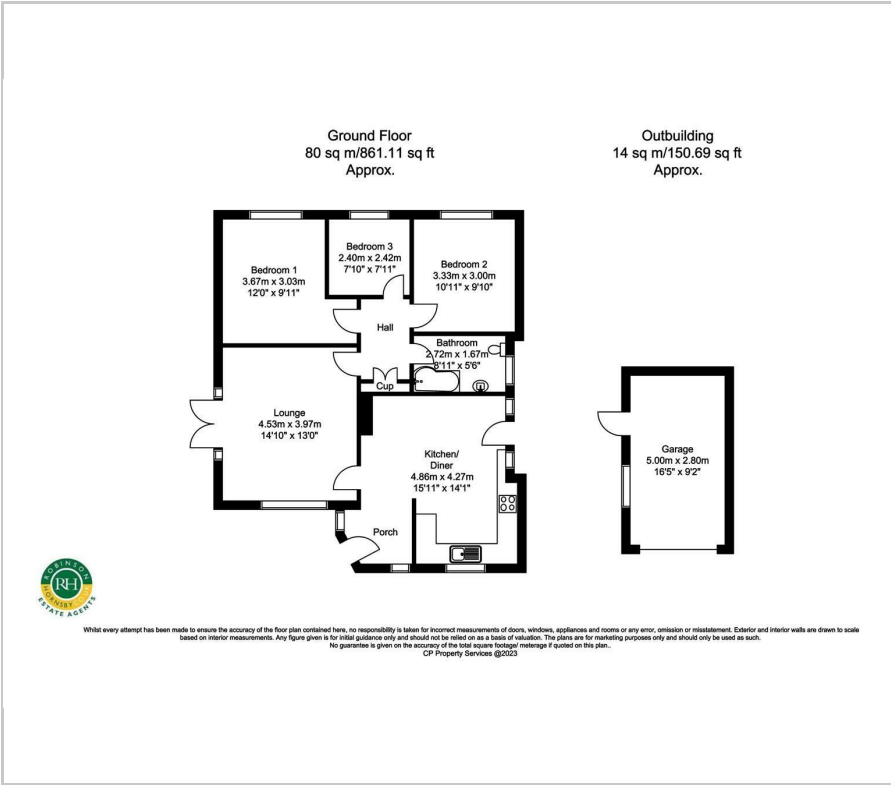
- renovated detached bungalow, re wire and new heating system
- 3 bedrooms, generous dining kitchen
- excellent level of appointment
- private plot with woodland aspect
- garage / parking
- close to local amenities in the village
- easy motorway access
- close to open countryside
- well worthy of inspection
- council Tax band C. Freehold. EPC rating- C

Viewing

Please contact our Office on 01302 751616 if you wish to arrange a viewing appointment for this property or require further information.



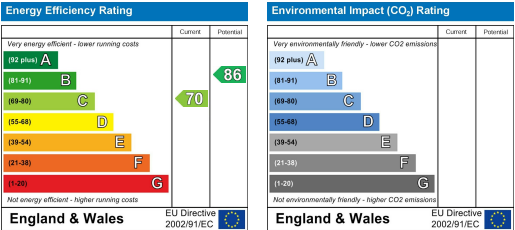
Floor Plan



Area Map



Energy Efficiency Graph



These particulars, whilst believed to be accurate are set out as a general outline only for guidance and do not constitute any part of an offer or contract. Intending purchasers should not rely on them as statements of representation of fact, but must satisfy themselves by inspection or otherwise as to their accuracy. No person in this firms employment has the authority to make or give any representation or warranty in respect of the property.